



RAL

ROADS AGENCY
LIMPOPO
TOGETHER FOR BETTER ROADS

WHO WE ARE

ROADS AGENCY LIMPOPO

Roads Agency Limpopo (RAL) is a state-owned infrastructure delivery company established under the Limpopo Province Roads Agency Act No. 7 of 1998, as amended. Operational since the 1999/2000 financial year, RAL is responsible for the planning, design, construction, maintenance, and management of Limpopo's provincial road network. As the custodian of provincial road infrastructure, our mission is to connect communities, support economic development, and ensure safe, accessible roads across the province. The Member of Executive Council responsible for the Limpopo Provincial Department of Public Works, Roads and Infrastructure is the sole shareholder of the entity, on behalf of the Limpopo Provincial Government.



MANDATE

The mandate of RAL is set out in Section 25 of the RAL Act 7 of 1998 as amended. The main functions and responsibilities of the Agency are to perform: All the planning, designing, construction, management, controlling and maintenance of provincial roads for the Limpopo Province.



VISION

Contributing to the socio-economic development by connecting the people of the Limpopo Province.



MISSION

Our mission is to provide a quality and sustainable provincial road infrastructure network for the economic development of Limpopo.

DIVERSITY

We value and embrace diversity within our organisation and the people with whom we work. We actively create opportunities for youth, women, and SMMEs, fostering inclusive growth across the road infrastructure value chain.

COMMITMENT

We are committed to delivering quality road infrastructure in the province. This is reflected in our consistent presence on the ground, prioritising projects that unlock economic and social access for communities.

EXCELLENCE

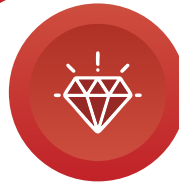
We strive to exceed expectations. We continuously endeavour to improve our methods, invest in innovation, and benchmark against best practices in infrastructure delivery.

RELIABILITY

We offer reliable, safe, and economic road infrastructure. Our projects are designed for long-term use, ensuring that road users can trust the quality of our infrastructure development.

TEAMWORK

We work together for better roads. Our collaborative approach brings together government, private sector, and local communities to co-deliver successful projects.



VALUES

Our values guide the way we operate in pursuit of our vision and mission.

EFFICIENCY

We go the extra mile in serving our communities. We try to work within tight budgets and timelines without compromising on safety or quality, delivering roads in strategic economic areas.

TRANSPARENCY

We are transparent in our internal and external business processes. Stakeholders are kept informed through open channels, ensuring public trust and organisational integrity.

ACCOUNTABILITY

We remain accountable to all our stakeholders and the environment. We try to ensure our work aligns with legal, ethical, and environmental standards that aim to meet the highest expectations of compliance reporting.

OUR IMPACT

ACCESSIBLE, RELIABLE
AND SAFE ROAD NETWORK

The development and maintenance of road infrastructure is critical for the economic prosperity of any region. Beyond laying tar, it's about transforming lives and economies. RAL's work contributes directly to Limpopo's development priorities and long-term growth.

RAL contributes to the economy of Limpopo by:

FACILITATING TRADE AND COMMERCE

Roads are the arteries of our economy. RAL enables regional trade by linking production areas to markets, with special focus on supporting the logistics of Mining, Agriculture and Tourism sectors, which are Limpopo's core economic pillars.

CREATING JOBS

Our road construction and maintenance projects generate employment across the province. We create job opportunities that benefit the youth, women and people living with disabilities in rural areas. These jobs directly improve the livelihoods of local communities.

SUPPORTING AGRICULTURE

Limpopo is a major agricultural hub. Roads are essential for farmers to transport their produce faster, reduce spoilage and to create access to larger domestic and export markets.

TOURISM GROWTH

Limpopo's natural attractions, game parks, heritage sites and scenic landscapes become more accessible through well-maintained roads, supporting local tourism enterprises and hospitality jobs.

QUALITY OF LIFE

Communities are able to use drivable roads to access social amenities such as schools, health facilities, government service points, economic hubs and workplaces quicker and safer.



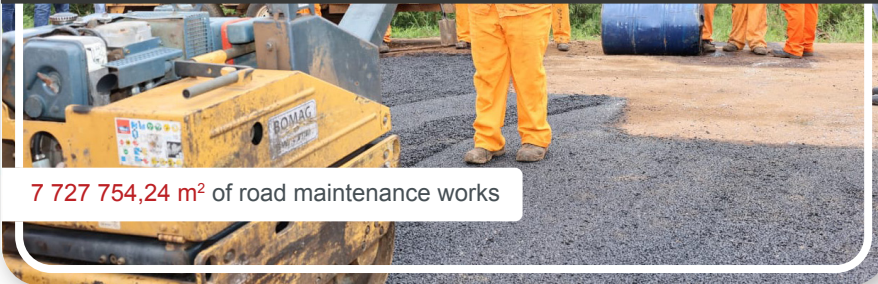
OUR FOOTPRINT

OUR FIVE-YEAR PERFORMANCE AT A GLANCE (2020 - 2025)

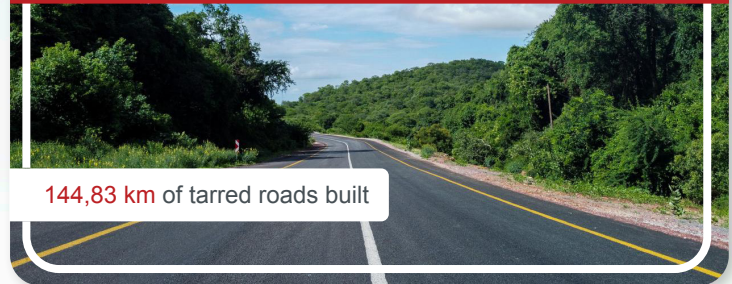
We have made measurable progress in delivering on our mandate.

361 PROJECTS
COMPLETED 2020 TO 2025

237 Maintenance projects
(Preventative & Routine)



65 Road upgrade projects
completed (Tarred Roads)



32

Flood Damage
Repairs



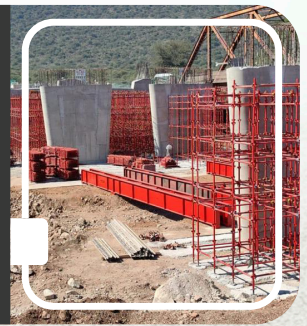
14

Roads
Regravelled



13

Bridges



EMPLOYMENT AND BUSINESS OPPORTUNITIES

Socio-economic impact in communities where construction projects were implemented – “touching lives”.



DID YOU KNOW? ROAD CATEGORIES



NATIONAL ROADS

National roads are roads that connect all the provinces of South Africa and in some cases connect South Africa with other African states. National roads are marked, N1, N2, N3, N11, N14. The letter “N” stands for the word national.

In some cases, these roads are marked R101, where the letter “R”, represents the word regional. The R101 and N1 for example, connect Gauteng to Limpopo, N14 connects Gauteng to Mpumalanga, N2 connects Gauteng to the KwaZulu Natal province.

South African National Roads Agency Limited (SANRAL) is responsible for all national roads in South Africa.



PROVINCIAL ROADS

In the Limpopo Province, RAL is responsible for provincial roads with its main functions and responsibilities being to plan, design, construct, manage, control, and maintain all provincial roads on behalf of the Limpopo Provincial Government.

Limpopo Provincial roads are roads that connect the five districts of the province, namely Capricorn, Mopani, Sekhukhune, Vhembe and Waterberg. Provincial roads are normally identified by the letters “P” for provincial and “D” for district.



MUNICIPAL ROADS/STREETS

Municipal roads are typically referred to as streets and are found in every city or village in South Africa. Various districts and local municipalities are responsible for these particular roads/streets.



DID YOU KNOW WE OFFER THESE SERVICES?

Wayleave:

Permission to construct a pipeline, powerline, control gate, telephone line crossing or along the provincial road network.

Signage:

Advertising on the visible part of the provincial roads.

Access roads:

Entry to or exit from the provincial road.

Proclamations:

Deproclamation or proclamation of public/provincial roads through the Regional Roads Board.

Applications for permits and enquires

Email: Landuse@ral.co.za



SCAN ME

RAL ROADS AGENCY
LIMPOPO
TOGETHER FOR BETTER ROADS

26 Rabe St, Polokwane Central,
Polokwane, 0700

Tel. +27 15 284 4600

Email. info@ral.co.za

SOCIAL MEDIA



RoadsAgency



[roadsagencylimpopo](https://www.facebook.com/roadsagencylimpopo)



[roadsagencylimpopo](https://www.instagram.com/roadsagencylimpopo)



www.ral.co.za