

TENDER BULLETIN

NO.06 OF 2020/21 FY
REF: 10/3/6/5

14 AUGUST 2020



LIMPOPO

PROVINCIAL GOVERNMENT
REPUBLIC OF SOUTH AFRICA

Bid documents may also be obtained for free from:
www.etenders.gov.za

Provincial Supply Chain Management Office

TABLE OF CONTENTS

| | Page No. |
|--|-----------------|
| 1. REPORTING FRAUDULENT AND CORRUPT ACTIVITIES..... | 03 |
| 2. INSTRUCTIONS..... | 04 |
| 3. BID INVITATION..... | 05 |
| 4. SPECIAL NOTICES..... | 07 |
| ANNEXURE 1: ADDRESS LIST AND CONTACT DETAILS: PROVINCIAL DEPARTMENTS..... | 08 |
| ANNEXURE 2: ADDRESS LIST AND CONTACT DETAILS: PUBLIC ENTITIES..... | 09 |
| ANNEXURE 3: ADDRESS LIST AND CONTACT DETAILS: PROVINCIAL TREASURY TENDER ADVISE CENTRES | 10 |
| ANNEXURE 4: ADDRESS LIST AND CONTACT DETAILS: SATELLITE OFFICES | 11 |
| 5. SELF REGISTRATION PROCESS..... | 12 |

REPORT

FRAUDULENT & CORRUPT ACTIVITIES ON GOVERNMENT PROCUREMENT SYSTEM

National Anti-Corruption @ 0800 701 701

Security and Investigating Services – Limpopo Provincial Treasury @ 015 298 7196

ALL COMPLAINTS/CONCERNS RELATED TO SCM NON-COMPLIANCE MUST BE REPORTED TO:

LIMPOPO PROVINCIAL TREASURY

PRIVATE BAG X 9486

POLOKWANE

0700

PROVINCIAL TREASURY, FINANCE HOUSE, 56 – 58 PAUL KRUGER STREET, POLOKWANE

2. INSTRUCTIONS

1. Bidders are advised to read the entire tender bulletin.
2. Tenders for procurement of supplies, services and disposals are categorized as follows:

SUPPLIES

- Accommodation, leasing of
- Audio visual equipment
- Building material
- Chemicals: Agricultural/Forestry/
- Laboratory/Water Care
- Clothing/Textiles
- Computer equipment
- Computer software
- Electrical equipment
- Electronic equipment
- Furniture
- General
- Medical
- Office equipment: Labour-saving devices
- Perishable provisions
- Stationary/printing
- Steel
- Timber
- Vehicle (all types)
- Workshop equipment

SERVICES

- Building
- Civil
- Electrical
- Functional (including cleaning-, and security services)
- General
- Maintenance of electrical, mechanical equipment and plumbing
- Mechanical
- Professional
- Repair and maintenance of vehicles
- Transport

DISPOSALS

- Clothing and textiles
- Furniture
- General
- Scrap metal
- Vehicles

3. Bid documents are generally available in English only.
4. The address where a bid document is available from and where it must be submitted to may differ.
5. The addresses at which bid documents may be obtained and to which tenders must be posted, appear in Annexure 1.
6. The address list of various Supply Chain Management Advice Centres at which bid documents and tender bulletins may also be obtained, appear in Annexure 3; and
7. The address list of Supply Chain Management satellite offices at which tender bulletins may also be obtained, appear in

LIMPOPO PROVINCIAL TENDER BULLETIN NO 06 OF 2020/21 FY, 14 AUGUST 2020

3. BID INVITATIONS

| BID NO. | DESCRIPTION OF SERVICE OR SUPPLIES | CONTACT DETAILS | BID DOCUMENT PRICE (NON-REFUNDABLE) | DUE AT 11H00 | BID DOCUMENTS OBTAINABLE FROM | POST OR DELIVER BIDS TO |
|--------------------------------|---|--|-------------------------------------|-------------------|---------------------------------|-------------------------|
| | | | | | See Annexure 1 & 2, Page 11- 12 | |
| RAL/2020/INTERNAL AUDIT/RFB007 | <p>Appointment of a Service Provider to Provide Internal Audit Support Services</p> <p>N.B: No Compulsory Briefing Session. Use the indicated email addresses and numbers for any enquiries</p> <p>Roads Agency Limpopo</p> | <p>Technical Aspects Ms P Maribana Tel No. 015 284 4660 e-mail: maribanap@ral.co.za</p> <p>Bidding Process Enquiries Mr Matsobane Dinala Tel No. 015 284 4628 e-mail: dinalamr@ral.co.za</p> | R85 | 07 September 2020 | 116 | 116 |
| PUDP 766 | <p>Catering Services at Limpopo Traffic Training College</p> <p>N.B: No Compulsory Briefing Session. Use the indicated email addresses and numbers for any enquiries</p> <p>Department of Transport and Community Safety</p> | <p>Technical Enquiries: Mr Nthakheni M @ 015 967 9300 nthakhenim@dtcs.limpopo.gov.za</p> <p>Ms Malebana Kwena @ 015 295 1126 malebanak@dtcs.limpopo.gov.za</p> <p>Administrative enquiries: Mr Maenetja MAO @ (015) 294 8223 maenetjao@dtcs.limpopo.gov.za</p> | N/A | 11 September 2020 | 105 | 105 |
| EOI-001/20/21 | <p>Expression of Interest (EOI) Potential Service Providers for Panel of Accredited Hardware and General Dealer Stores in the Limpopo Department of Health for the Period of Thirty-Six (36) Months (Three Years) as and when the Need Arises</p> | <p>Technical Aspects Mr Dhamini T</p> <p>Tel No. 015 293 6125 e-mail: timdhlamini@dhsd.limpopo.gov.za</p> | N/A | 30 September 2020 | 103 | 103 |

LIMPOPO PROVINCIAL TENDER BULLETIN NO 06 OF 2020/21 FY, 14 AUGUST 2020

| | | | | | | |
|--------------------|---|---|-----|-------------------|-----|-----|
| | <p>N.B: No Compulsory Briefing Session. Use the indicated email addresses and numbers for any enquiries</p> <p>Department of Health</p> | <p><u>Bidding Process Enquiries</u> Ms.TO Simango / Ms. N.M Motene Tel No: 015 293 6352 e-mail: tintswalo.simango@dhsd.limpop.gov.za</p> | | | | |
| PRDP 10/2020/21 | <p>The provision of a Customer Contact Centre Service for the Premier's Hotline (Re-advertisement)</p> <p><u>Briefing Session</u> A non-compulsory briefing session will be held on the 03rd of September 2020, 11H00, at Old Cabinet Boardroom (40 Hans van Rensburg Street, Polokwane, Limpopo Province</p> <p>Office of the Premier</p> | <p><u>Bidding Process Enquiries</u> <u>Ms</u> Nemuhuyuni E Tel: 015 287 6278</p> <p><u>Technical Enquiries:</u> tenders@premier.limpopo.gov.za</p> | R85 | 14 September 2020 | 102 | 102 |

SPECIAL NOTICES

1 LIMPOPO PROVINCIAL TREASURY

**1.1 (SCM ADVICE CENTERS):
ADVERTISEMENTS OF LIMPOPO CSD CALL CENTRE LINES FOR SUPPLIERS**

LIMPOPO CSD CALL CENTRE LINES FOR SUPPLIERS

| DISTRICT | CALL CENTRE NUMBER | OFFICIAL RESPONSIBLE | TIME |
|-----------------|---------------------------|-----------------------------|----------------|
| Capricorn | 015 291 2684 | Mr. Kgomo AE | 07H30 TO 16H30 |
| Mopani | 015 812 0256 | Ms. Nxumalo P | 07H30 TO 16H30 |
| Sekhukhune | 013 265 1071 | Mrs Morena MM | 07H30 TO 16H30 |
| Vhembe | 015 962 0014 | Mrs. Nefolovhodwe MQ | 07H30 TO 16H30 |
| Waterberg | 014 717 1376 | Mrs. Tsatsi AT | 07H30 TO 16H30 |

2. NOTICE TO SUPPLIERS

SUPPLIERS ARE HEREBY NOTIFIED TO REGISTER THEIR COMPANIES / BUSINESSES ONTO THE PROVINCIAL DATABASE FOR THE SUPPLY OF PPES. REGISTRATION FORM CAN BE DOWNLOADED FROM LIMPOPO PROVINCIAL TREASURY (LPT) WEBSITE.

NB. SUPPLIERS WHO REGISTERED INITIALLY MUST NOT RE-REGISTER

LIMPOPO PROVINCIAL TENDER BULLETIN NO 06 OF 2020/21 FY, 14 AUGUST 2020

ANNEXURE 1: ADDRESS LIST AND CONTACT DETAILS: LIMPOPO PROVINCIAL DEPARTMENTS

| UNIQUE REF. NO. | BID DOCUMENT REFERENCE | CONTACT DETAILS | DOCUMENTS SOLD AT: | DOCUMENTS DEPOSITED AT |
|-----------------|------------------------|---|--|---|
| 100 | DSDP | Tel: 015 293 6000 Fax: 015 293 6211 Website: www.limpopo.gov.za | Department of Social Development , Office No. 57 Ground Floor, 21 Biccard Street POLOKWANE | Deposited in the box located at Department of Social Development, 21 Biccard Street Polokwane |
| 101 | LPT | Tel: 015 298 7000 Fax: 015 295 7010 Website: www.limpopo.gov.za | Provincial Treasury 46 Hans Van Rensburg Street, POLOKWANE and all Provincial Treasury Tender Advice Centres | Deposited in the bid box located outside a guard house at Ismini Towers, 46 Hans Van Rensburg Street, Polokwane |
| 101A | TC/LP | Tel: 015 291 8400 Fax: 015 295 3310 Website: www.limpopo.gov.za | Provincial Treasury 56 – 58 Paul Kruger Street, POLOKWANE and all Provincial Treasury Tender Advice Centres | Deposited in the bid box located in the main entrance, Finance House Building, 56-58 Paul Kruger Street, Polokwane |
| 102 | PRDP | Tel: 015 287 6000 Fax: 015 295 3840 Website: www.limpopo.gov.za | Office of the Premier , 40 Hans van Rensburg Street, POLOKWANE and all SCM Advice Centres | Deposited in the bid box located at Mowaneng Building, 40 Hans van Rensburg Street, Polokwane |
| 103 | HEDP | Tel: 015 293 6000 Fax: 015 293 6211 Website: www.limpopo.gov.za | Department of Health , Office No. D3 Ground Floor, Old Capricorn Building, 18 College Street, POLOKWANE and all Provincial Treasury Tender Advice Centres | Deposited in the box located at Department of Health and Social Development, 18 College Street, Polokwane |
| 104 | LPEDT | Tel: 015 290 7600/1 Fax: 015 297 4494 Website: www.limpopo.gov.za | Department of Education , Corner 113 Biccard and 24 Excelsior Streets, POLOKWANE and all Provincial Treasury Tender Advice Centres | Deposited in the bid box located in the main entrance of corner 113 Biccard Street and Excelsior Street, Polokwane |
| 105 | PUDP | Tel: 015 295 1000 Fax: 015 295 1163 Website: www.limpopo.gov.za | Department of Roads & Transport , 40 Paul Kruger Street, POLOKWANE and all Provincial Treasury Tender Advice Centres | Deposited in the bid box located at 1 st Floor, Paul Kruger Wing, 40 Paul Kruger Street, Polokwane |
| 106 | DSSL | Tel: 015 290 2900 Fax: 015 291 4452 Website: www.limpopo.gov.za | Department of Safety, Security and Liaison , 32 Schoeman Street, POLOKWANE and all Provincial Treasury Tender Advice Centres | Deposited in the bid box located in the main entrance of 32 Schoeman Street, Polokwane |
| 107 | COGHSTA | Tel: 015 294 2000 Fax: 015 295 4190 Website: www.limpopo.gov.za | Department of Co-Operative Governance, Human Settlements & Traditional Affairs , 28 Market Street, Office No. G 74, Ground Floor, Polokwane. | Deposited in the bid box located at Hensa Towers, Cnr of Rabe and Landdros Mare Streets, Polokwane |
| 108 | DSAC | Tel: 015 284 4000 Fax: 015 284 4514 Website: www.limpopo.gov.za | Department of Sport, Arts and Culture Olympic Towers, Corner Rabe and Biccard Street, POLOKWANE and all Provincial Treasury Tender Advice Centre | Deposited in the bid box located in the main entrance of Olympic Towers, Corner 21 Rabe and Biccard Street, Polokwane |
| 109 | LEDET | Tel: 015 293 8300 Fax: 015 293 8319 Website: www.limpopo.gov.za | Department of Economic Development, Environment & Tourism , 90 Bok Street, POLOKWANE and all SCM Advice Centres | Deposited in the bid box located in the main entrance of Evridiki Towers, 19 Biccard Street, Polokwane |
| 110 | LDPW & WODP | Tel: 015 284 7000 Fax: 015 284 7031 Website: www.limpopo.gov.za | Department of Public Works, Roads and Infrastructure ; Towers, 43 Church Street, POLOKWANE and all Provincial Treasury Tender Advice Centres | Deposited in the bid box located at Corner Blaawberg and River Street Ladanna Polokwane 0699 Private Bag X9490 Polokwane 0700 |
| 111 | ACDP | Tel: 015 294 3000/30/60/90/20 Fax: 015 294 4506 Website: www.limpopo.gov.za | Department of Agriculture , Temo Towers, 69 Biccard Street, POLOKWANE and all Provincial Treasury Tender Advice Centres | Deposited in the bid box located in the main entrance of AgriVillage, 69 Biccard Street, Polokwane |

LIMPOPO PROVINCIAL TENDER BULLETIN NO 06 OF 2020/21 FY, 14 AUGUST 2020

ANNEXURE 2: ADDRESS LIST AND CONTACT DETAILS: LIMPOPO PUBLIC ENTITIES

| UNIQUE REF. NO. | BID DOCUMENT REFERENCE | CONTACT DETAILS | DOCUMENTS SOLD AT: | DOCUMENTS DEPOSITED AT |
|-----------------|------------------------|--|---|---|
| 112 | RFB: LIMP | Tel: 015 293 3621 Fax: 015 293 3660 Website: www.golimpopo.com | State Information Technology Agency (SITA) Limpopo Office, Moolman Building, 27 Market Street, POLOKWANE, 0699 | Bid box located in the Main Entrance of Moolman Building, 27 Market Street, Polokwane |
| 113 | LTA | Tel: 015 293 3600 Fax: 015 293 3655 Website: www.golimpopo.com | Limpopo Tourism Agency , ERF 92/688, Portion 2 Southern Gateway, Ext 4, N1 Main Road, Polokwane 0699 | Bid box located in the offices ERF 92/688, Portion 2 Southern Gateway, Ext 4, N1 Main Road, Polokwane 0699 |
| 114 | LGB | Tel: 015 295 5581 Fax: 015 295 3566 Website: www.lgb.org | Limpopo Gambling Board , 22 Schoeman Street, POLOKWANE, from 08H30 to 16H00 | Bid box located in the main entrance, ground floor, 22 Schoeman Street, Polokwane |
| 115 | LEDA | Tel: 015 633 4700 Fax: 015 633 4854 Website: www.leda.co.za | Limpopo Economic Development Agency Enterprise Development Finance, Main Road Lebowakgomo | Bid box located in the main entrance, Enterprise Development Finance, Main Road Lebowakgomo |
| 116 | RAL | Tel: 015 284 4600 Fax: 015 284 4701 Website: www.ral.co.za | Road Agency Limpopo (RAL) , RAL Towers, 26 Rabe Street, POLOKWANE, 0700 | Bid box located in the entrance foyer (ground floor) of RAL Towers, at 26 Rabe Street, Polokwane |
| 117 | GAAL | Tel: 015 288 0122 Fax: 015 288 0346 Website: www.gaal.co.za | Gateway Airports Authority Limited , N1 Road to Louis Trichardt, Army Base, POLOKWANE International Airport, Polokwane, 0700 | Bid box located in the main entrance, ground floor of administration building, Polokwane International Airport, Army Base |
| 118 | VIVET | Tel: 015 963 3156 Fax: 015 963 3154 Website: www.fetcol@mweb.co.za | Vhembe FET College , Stand No. 203, Unit A, Sibasa, 0970, Limpopo Province | Vhembe Fet College, Central Office, Private Bag X2136, SIBASA 0970 |
| 119 | WTVET | Tel: 015 491 8581/8602 Fax: 015 491 8579 Website: www.procurement@waterbergcollege.co.za | Waterberg FET College , Central Office, 36 Hooqe Street Street, Mokopane, 0600 | Waterberg FET College , Central Office, 36 Hooqe Street Street, Mokopane, Private Bag x 2449, Mokopane 0600 |
| 120 | GNT | Tel. 015 291 2641 Fax. 015 291 2648 | No. 130a Marshall Street, Polokwane.0700 | Great North Transport No. 130 Marshall Street, Polokwane.0700 |
| 122 | MT | Tel. 015 2907715/7772 | Mvula Trust 25 Rhodesdrift Street, Rhodesdrift Office Park, Bendor Ext 30, Polokwane | Mvula Trust 25 Rhodesdrift Street, Rhodesdrift Office Park, Bendor Ext 30, Polokwane |
| 123 | CCTVET | Tel.015 230 1800 Fax. 015 291 2767 | Capricorn College for TVET 16 Market Street, Polokwane | Private Bag Bag X9674 Polokwane0700 |
| 124 | IDT | Tel: 015 295 0000 Fax: 015 295 6559 | Independent Development Trust 22 Hans van Rensburg Street, Polokwane, 0700 | Independent Development Trust P.O.Box 55386 Polokwane 0700 |
| 125 | DBSA | scmqueries@dbsa.org | Development Bank of Southern Africa Welcome Centre 1258 Lever Road Midrand | Development Bank of Southern Africa Welcome Centre 1258 Lever Road Midrand |

LIMPOPO PROVINCIAL TENDER BULLETIN NO 06 OF 2020/21 FY, 14 AUGUST 2020

ANNEXURE 3: ADDRESS LIST AND CONTACT DETAILS: PROVINCIAL TREASURY TENDER ADVICE CENTRES

(Tender bulletins and bid documents are obtainable from the following Centers):

| PROVINCIAL TREASURY SUPPLY CHAIN MANAGEMENT ADVICE CENTRES | |
|--|---|
| <p>HEAD OFFICE</p> <p>Provincial Supply Chain Management Office 56 – 58 Paul Kruger Street POLOKWANE Private Bag x9494 POLOKWANE, 0700 Tel No. (015) 291 8400</p> <p>Contact: Ms. M.B Rakubu @ Tel: 015 291 8717/6</p> | <p>Capricorn SCM Advice Centre</p> <p>Limpopo Provincial Treasury 56-58 Paul Kruger Street Private Bag x9494 POLOKWANE, 0700 Tel No. (015) 291 8400</p> <p>Contact Person: Ms. M.M. Masindi</p> |
| <p>Vhembe SCM Advice Centre</p> <p>Limpopo Provincial Treasury Government Building Complex BLOCK E GROUND FLOOR THOHOYANDOU, VENDA Tel: (015) 962 1752 Fax: (015) 962 1282</p> <p>Contact Person: Ms. A Manena</p> | <p>Mopani SCM Advice Centre</p> <p>Limpopo Provincial Treasury Private Bag X 1973 GIYANI, 0826 Tel: (015) 812 0149 Fax: 086 219 7905</p> <p>Contact Person: Mr. G Muravha</p> |
| <p>Waterberg SCM Advice Centre</p> <p>Limpopo Provincial Treasury 98 Nelson Mandela Street Decimale Building MODIMOLLE Tel: (014) 717 5837 Fax: (014) 717 5670</p> <p>Contact Person: Mr. AT Tsatsi</p> | <p>Sekhukhune SCM Advice Centre</p> <p>Limpopo Provincial Treasury Lefa Centre, Schoonoord Road JANE FURSE Tel: (013) 265 1344 Fax: (013) 265 1354</p> <p>Contact Person: Mr. M. S. Sehale</p> |

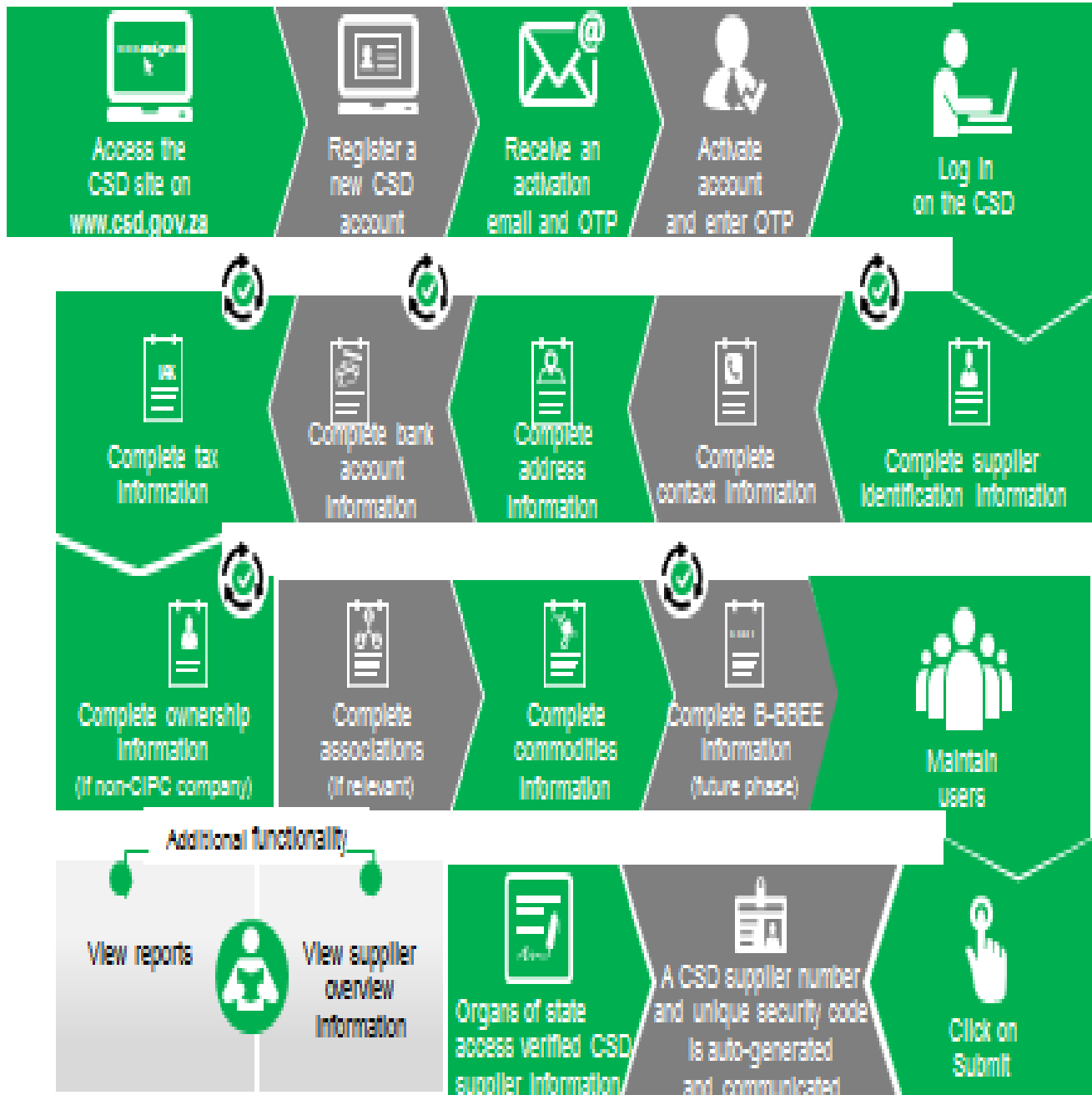
LIMPOPO PROVINCIAL TENDER BULLETIN NO 06 OF 2020/21 FY, 14 AUGUST 2020

ANNEXURE 4: ADDRESS LIST AND CONTACT DETAILS: SATELLITE OFFICES

(Tender bulletins are obtainable from the following centers)

| CAPRICORN | VHEMBE | MOPANI | WATERBERG | SEKHUKHUNE |
|-----------|--------|--------|---|------------|
| | | | Libsa Thabazimbi: No.08 Riet Bok Street Tel. No. (014) 772 2437 | |
| | | | Libsa Lephalale No. 3A Venter Street Tel. No. (014) 763 2834 | |

Supplier Self-Registration Process



Auto verification of supplier information with SARS, GPC etc.